



TERMINOLOGY:  
WHAT DOES IT MEAN?

ROLLER SHUTTER DOORS

OUR PROMISE. YOUR PROTECTION.

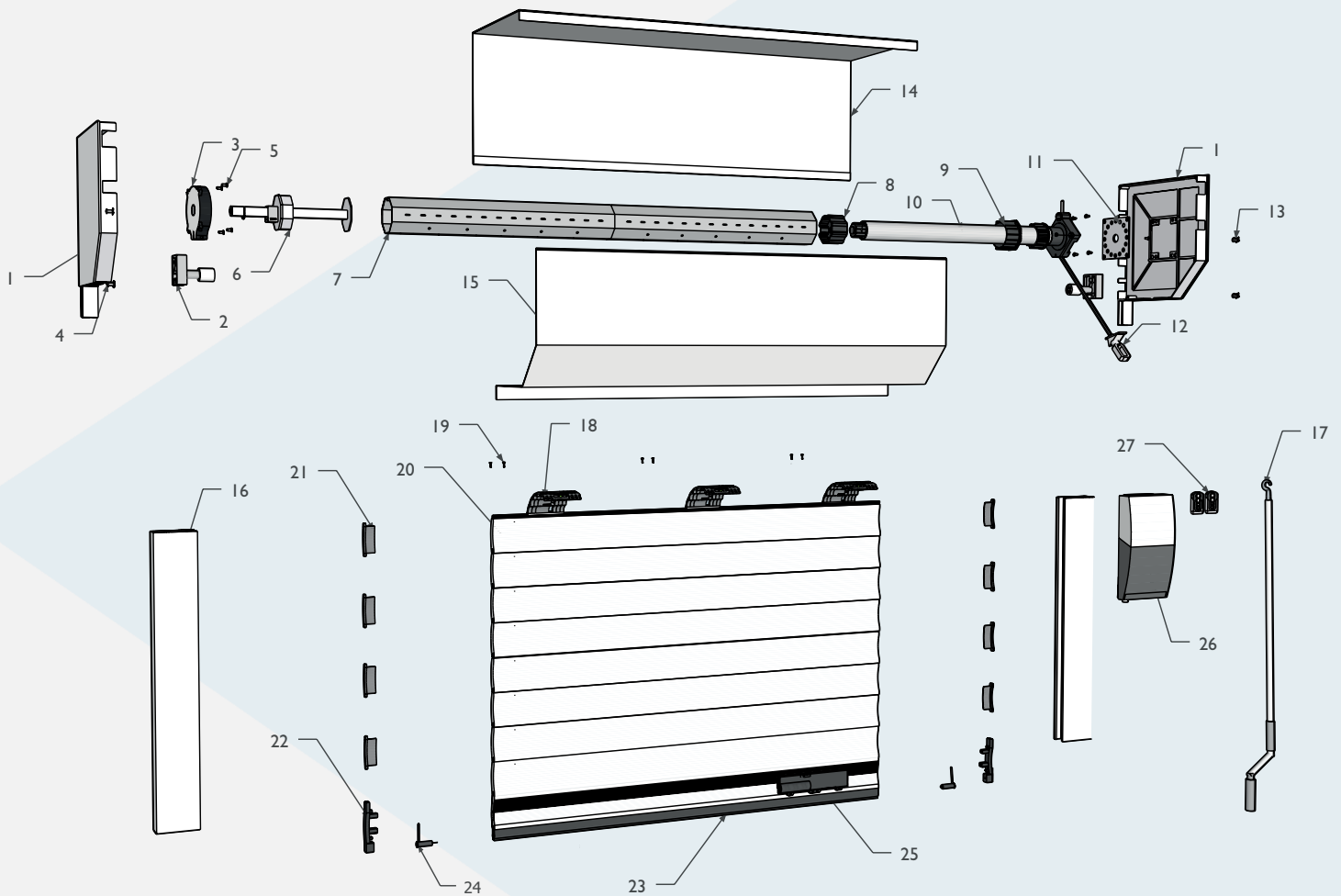




## Introduction

**Roller shutters have many parts. We understand that if you're fitting your own roller shutter or something goes wrong with your already installed shutter, knowing the anatomy of your roller shutter is key to diagnosing what the part or problem is.**

The team here at UK Roller Shutters thought it would be a great idea to create this nifty little guide to help you explain the parts of your shutter if you need to drop us a call.



## Motorized Rolling Shutter (10" x 12" Box)

- |                                   |   |
|-----------------------------------|---|
| 1. End plate                      | 15. Enclosure (lid)                     |
| 2. Roller wheel                   | 16. Guide channel                       |
| 3. Safety brake / captive bearing | 17. Override handle                     |
| 4. Screw for roller wheel         | 18. Selve locking strap                 |
| 5. Screw for safety brake         | 19. Selve locking strap screw           |
| 6. Floating shaft end             | 20. Curtain slat                        |
| 7. Steel tube                     | 21. Curtain slat end lock               |
| 8. Motor drive end                | 22. Bottom bar end lock                 |
| 9. Motor collar                   | 23. Rubber weather seal                 |
| 10. Tubular motor                 | 24. Optical safety edge send / receiver |
| 11. Motor fixing plate            | 25. Optical safety edge transmitter     |
| 12. Override eyelet               | 26. Control panel                       |
| 13. Screw for motor head          | 27. Radio remote control handset        |
| 14. Enclosure (back box)          |   |



## Explanation of the workings of a roller shutter

**Roller shutters are usually made up from interlocking slats. This allows the structure to roll up and down on a rotating barrel held by two steel supports.**

The guides on the sides of the structure allow it from moving side to side and ensure that it only moves up and downwards allowing for support of the structure.



# Main components

## The Barrel

This is the cylindrical holder of the curtain of the door. This rotates downwards to lower the curtain, closing it. It also rotates upwards to raise and open the curtain.

## The Curtain

This is the collection of metal interlocking slats that raise and lower to cover the opening. These are the main visible part of the shutter (the door) that covers the opening once shut.

The base rail at the bottom of the shutter (the end slat) is fitted with a seal for added weather proofing.

## The Motor

The tubular motor is fitted to the barrel and is used to turn the barrel, leading to the shutter opening and closing. This is securely mounted to the wall by the motor plate.



UK Roller Shutters offer service and maintenance contracts including on-site surveys

**+44 (0) 1384 221743**





### **The Guides**

The guides are rails on either side of the curtain and help to keep the curtain in a straight line to ensure a secure close.

### **The Head Plate**

These plates are positioned on both sides of the barrel and are designed to attach the equipment to the building, taking a majority of the weight off the shutter.

### **The End Lock**

These are attached to alternating slats to avoid slipping and to ensure that the curtain is held in place and does not slide around.



### **The Full Box**

This is where the main operating components are kept. This tidies the appearance of the roller shutter, it also protects all of the mechanisms from damage.

### **The Security Straps**

These help to securely fasten the barrel to the shutter curtain ensuring that they're attached together well.



Our variety of Roller Shutters can suit any need, just pop us an email and we can help you out

**[sales@ukrollershutters.co.uk](mailto:sales@ukrollershutters.co.uk)**



## Operational Components

### Remote Control

For electrically operated shutters, this is an option depending on the specifications of your shutter. This allows the shutter to be operated from inside and outside, closing and opening the shutter.

### Switch

This is usually attached to the wall and allows the roller shutter to be operated electrically to reduce strain.

### Handle/Chain

This is how a manually operated roller shutter is raised or lowered. Either with the use of a handle for “push-up” operation or the use of a chain pulley system.



## Still need help?

**Are you still unsure on which parts need to be fitted where or which parts of your shutter may not be functioning to the best of their ability?**

Why not give us a call on 01384 221 743  
between the hours of 8.00am - 4.30pm  
Monday - Thursday  
and 8.00am - 2.00pm on Friday  
and our team will be more than happy to help!



Call us today to discuss our range  
of roller shutters available to help  
keep your premises safe

**+44 (0) 1384 221743**



## OUR PROMISE. YOUR PROTECTION.



### UK Roller Shutters Ltd

Unit 41  
Wombourne Enterprise Park  
Bridgnorth Road  
Wombourne  
United Kingdom  
WV5 0AL

**T:** +44 (0) 1384 221743  
**E:** [sales@ukrollershutters.co.uk](mailto:sales@ukrollershutters.co.uk)  
**W:** [ukrollershutters.co.uk](http://ukrollershutters.co.uk)

