

# TB/LNK Security Grille

## Applications

Medium security commercial sites where see-through vision is a priority.

## Grille lattice

Brick-bond effect or standard arrangement.

Aluminium 13mm diameter tubes cut to 111mm as standard, with anodised finish enclosing an 8mm steel rod.

Vertical lattice links are 86mm high, leaving 56mm high openings; smaller or larger apertures on request.

**N.B.** Colour finishes available on request.

Tube length: 111mm  
 Link Height: 86mm  
 Weight per m<sup>2</sup>: 10kg  
 Maximum Width: 6,000mm  
 Maximum Surface: 20m<sup>2</sup> with single phase power or 3-phase power.

## Housing

Grilles less than 12m<sup>2</sup>: roll-formed housing from 1.0mm aluminium; pressure moulded aluminium end caps; In white or brown as standard.

Grilles over 12m<sup>2</sup>: housing manufactured from 1.2mm galvanised steel sheet; end caps are fabricated from 5mm steel; standard galvanised finish; other colours available on request.

Guide Length (up to mm)	Box Size (up to mm)
2200	300
3600	360
5500	400

3-phase motor application enclosure sizes will vary dependent on the overall shutter size.

**N.B.** The above enclosure sizes are based on standard tube motor operation and 3-phase external direct drive motor.

## Guide Channels / Bottom Slat

68mm mill, white or brown aluminium guide sections are standard for grilles under 12m<sup>2</sup>. T-shape bottom bar from galvanised steel.

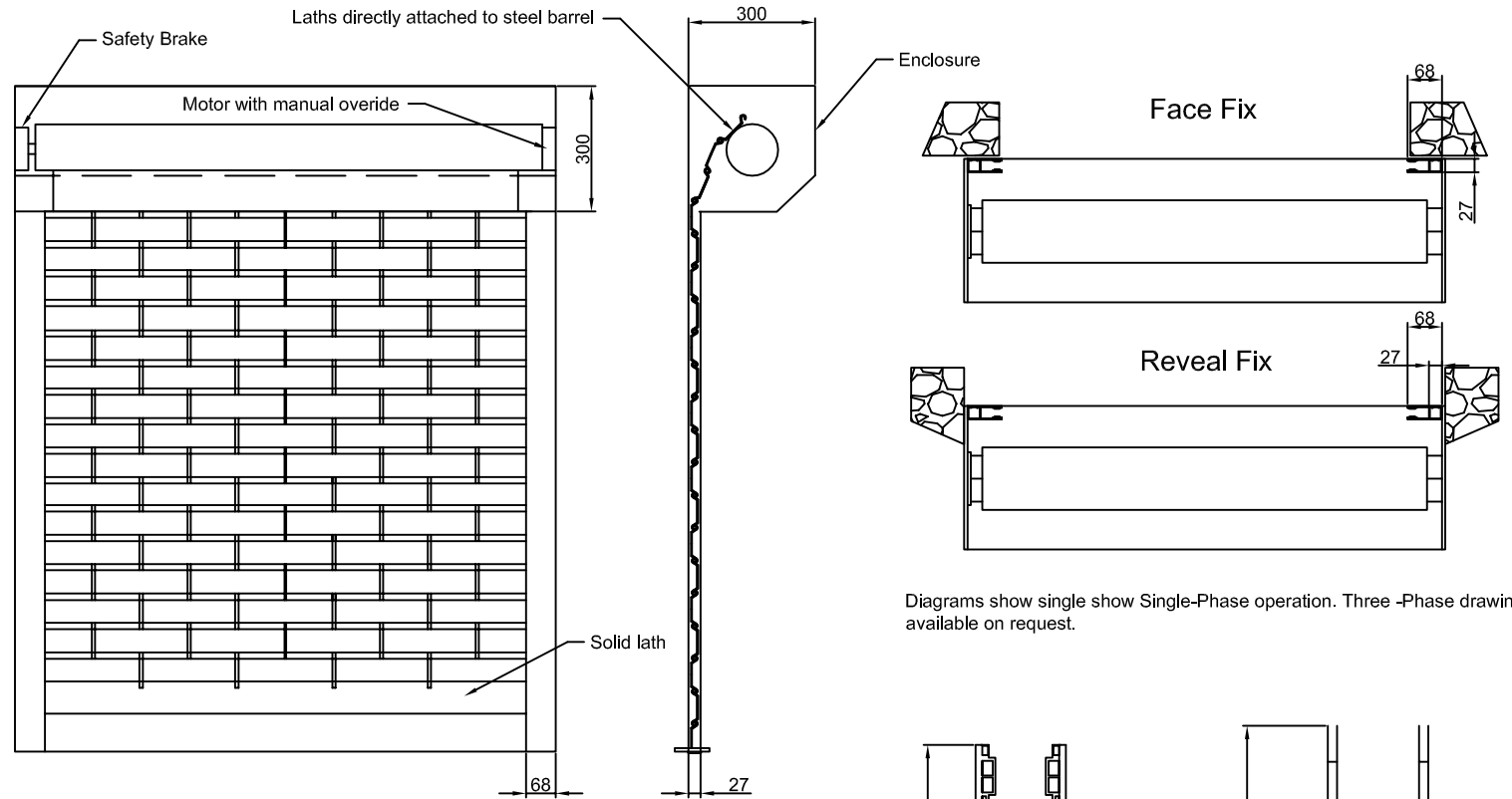
While the standard guide channel is 68x27mm, the U-channel guide affixed to box sections or angles is advised for shutters in excess of 12m<sup>2</sup> (see drawing to the right).

## Operation

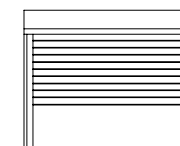
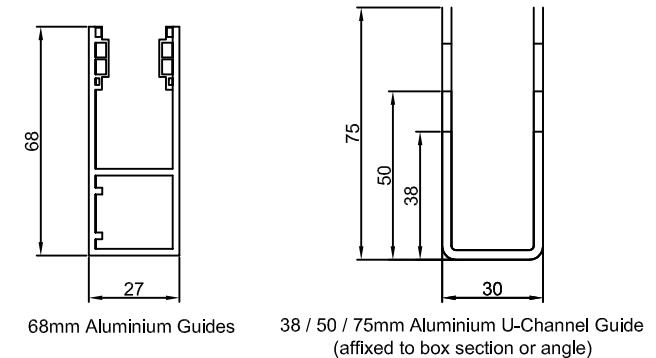
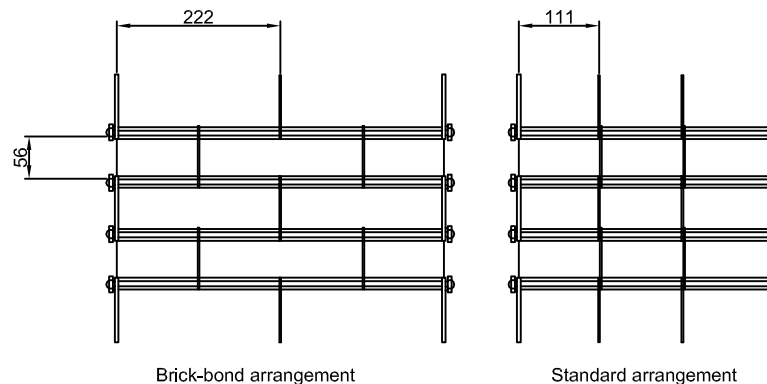
**Electric:** Single phase tubular motor or 3-phase direct drive motor dependent on curtain weight, with push button control. Remote control operation is available, and includes Optical safety Edge; a PEC beam may also be appropriate when using remote control operation.

Manual override facility as required.

**Safety brake included as standard, to meet requirements of BS EN 13241-2003-1**



Diagrams show single show Single-Phase operation. Three -Phase drawing available on request.



UK Roller Shutters & Garage Doors  
 Yew Tree Farm  
 Gospel Ash Road  
 Bobbington  
 Stourbridge  
 DY7 5EF

Telephone: 01384 221743