

# UKRS E-Speed Insulated Roller Shutter

## Shutter Curtain

Constructed from pre-galvanised material. Ecotech formula foam infill - CFC free/ODP zero with a low global warming overall 'U' value of 4.8 W/m<sup>2</sup>K. Each panel section is 94mm deep with multi-ribbed face for rigidity.

## End Locks

The curtain, when assembled is held in position with purposely-designed injection moulded end fittings, manufactured from hardwearing nylon-6, which sits on the outside of the panels minimising scuffing and damage.

## Bottom Seal

The bottom panel of the shutter is terminated with a specially designed aluminium extruded section complete with interlocking (EPDM) rubber weather seal.

## Barrel

Manufactured from seamless mild steel tube to BS4760 Grade 50C. Size to suit door width and height. Maximum barrel deflection 1:400. Fitted with precision-machined BDMS axles to BS970 EN33.

## Main Support Brackets

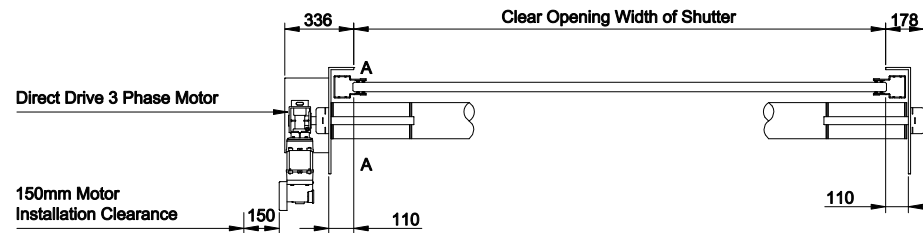
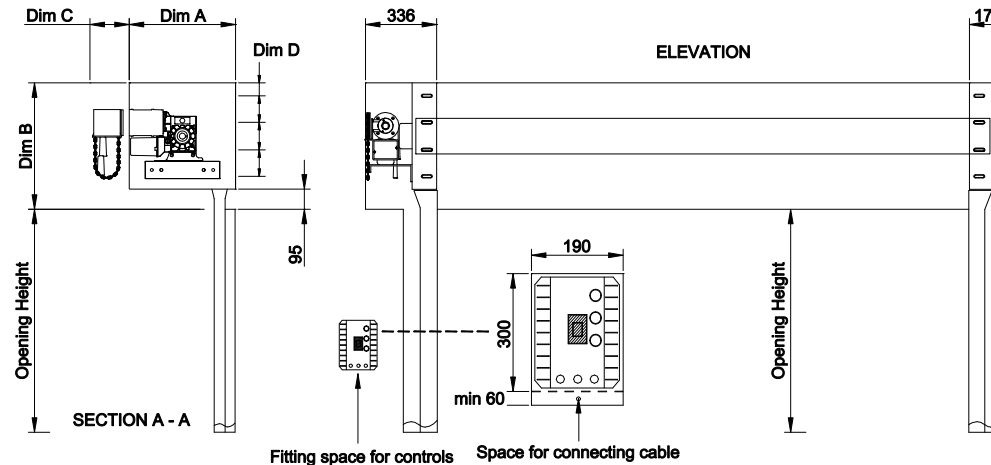
Main support plates for the barrel and motor unit are manufactured from mild steel plates of varying thickness and incorporate the necessary fixing positions for securing back to the opening structure.

## Vertical Side Guides

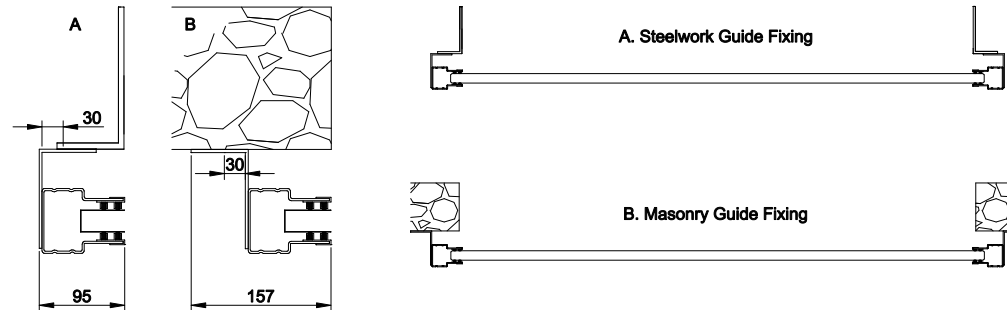
Formed from pre-galvanised material having a minimum thickness of 2.5mm incorporating twin vertical brushes on both inner and outer face of the guide. Brush carrier is constructed from PVC of medium impact strength, finished black and incorporating twin siliconised polypropylene weather strips, these running the full height of the door guide. The guide form is designed to allow reduced working faces and tapered inner faces to provide automatic interlocking/retaining feature for performance of retention under wind load. Complete with continuous 100 x 65 galvanised fixing angle.

## Operation

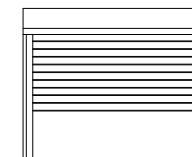
Operation via Safedrive FI Drive unit with built-on frequency inverter with high precision worm drive gear box with integral safety brake system to British and European standards for industrial doors BS 12604:2002. Mechanical aspects and BS 12453:2001 safety in use of power operated doors. Drives are designed for a typical door size to have a life of more than 20,000 cycles and for use up to 6 times per hour. The drive is fitted with low level manual operation in accordance with EN 12453 and 12604 hand force up to 390N is permissible for large, heavy doors. Manual operation is only used for closing the door. In case of Safedrive units fitted with electric brakes, manual operation is carried out against the brake.



WIDTH	HEIGHT	Dim A	Dim B	Dim C	Dim D
2000	2000	350	450	235	25
3000	3000	350	550	235	25
4000	4000	400	595	229	20
5000	5000	450	645	285	35
6000	6000	500	695	235	60
Door hood addition - Dim B + 50					



All Dimensions in mm



UK Roller Shutters & Garage Doors  
Yew Tree Farm  
Gospel Ash Road  
Bobbington  
Stourbridge  
DY7 5EF

Telephone: 01384 221743