

LPSSHUT-4 Security Shutter

Applications

A rolling shutter of the highest available security level, for use on sites such as government premises, police stations, banks, and utilities supply installations. The LPSSHUT-4 has been tested by the Loss Prevention Certification Board LPS1175 (7.0), rated SR4, and awarded 'Secured by Design' status. Internal face-fix installation only. CE marked to harmonised product standard BSEN 13241-1:2003.

Finish

All shutters are galvanised finish as standard; polyester powder-coated to any RAL / BS colour on request.

Locking mechanisms

The LPSSHUT-4 incorporates a bullet locking system situated 1 meter from ground level, fixed to each guide channel; side anchors inside guide; reinforcement bars through the walls of the slat; transverse ground locking system on shutters over 3 meters wide. Lock isolator kits available to prohibit operation of the shutter while in the locked condition.

Curtain Slat

Double skin, mild steel, 81mm face lath. Wall thickness 1.2mm (18swg). Concealed reinforcement bars and security end locks fitted.

Visible Surface	81mm
Profile Height	100mm
Weight per m ²	100kg (including reinforcement)
Maximum Width	7,000mm
Maximum Surface	35m ² with externally mounted motor

Housing

Housing manufactured from 0.9mm steel sheet (20swg). End caps are fabricated from steel plate.

Shutter Height Box Size

(up to mm)	(mm)
2500	400
3500	450
5000	500

Guide Channels / Bottom Slat

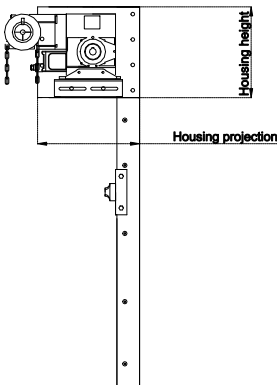
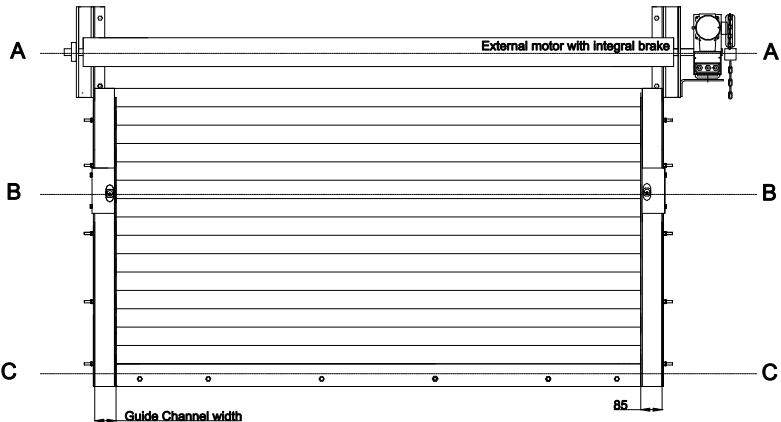
Bottom slat is identical to other slats in appearance for shutters under 3m in width. Transverse locking system on bottom slat for shutters over 3m wide.

Guide channel depth is 70mm with an 85mm face. Guide channels are bolted onto 100x50x6mm angle. See Plan drawings on this sheet.

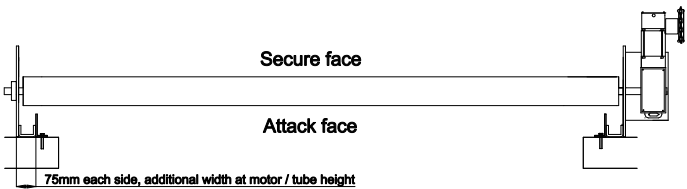
Operation

Electric: External motor in single or 3-phase with push button control. High security wired or wireless key-pad for installation on the 'attack' face of an opening. (Only approved switches may be used on the external face of an opening). Manual override by removable handle (for tubular motors), haul chain (for externally mounted motors).

Viewed from secure side (internal)



Plan - A



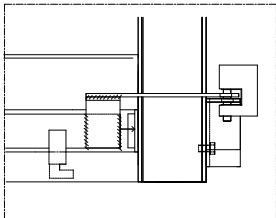
Plan - B



Plan - C

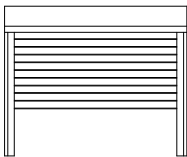
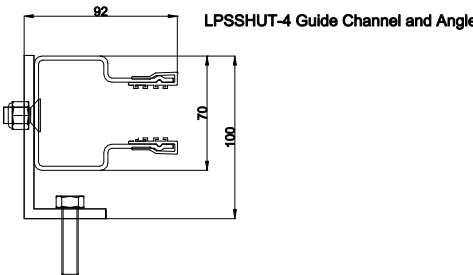
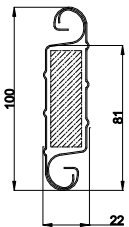


Transverse bottom slat lock and padlock, viewed from secure side, Elevation



Transverse bottom slat lock and padlock, for shutters with width greater than 3 metres (viewed from secure side)

LPSSHUT-4 Slat with reinforcement bar



UK Roller Shutters & Garage Doors
Yew Tree Farm
Gospel Ash Road
Bobbington
Stourbridge
DY7 5EF

Telephone: 01384 221743