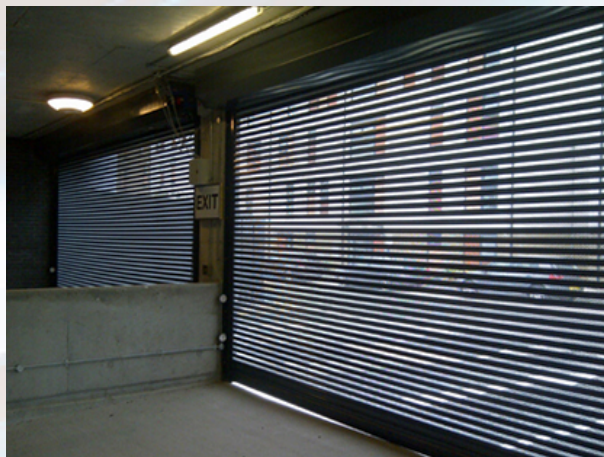




CRPK-SR2 HIGH SECURITY CAR PARK SHUTTERS

CRPK-SR2 HIGH SECURITY CAR PARK SHUTTERS

CRPK-SR2



PRODUCT DESCRIPTION

Our CRPK-SR2 model roller shutter has been designed with the specific goal of achieving LPS1175 SR2 when securing a car park whilst also allowing visibility and airflow

Car parks typically require a degree of ventilation, particularly if they are underground, due to the amount of fumes that is produced.

Additionally, Secured by Design typically require that every Greenfield building and most Brownfield renovations require materials that is "Secure by Design" and LPS1175 SR2 or above.

This is where the CRPK-SR2 is unique. Unlike similar products in the industry, it has a self-locking mechanism so does not require additional retro fitting locks (like bullet locks or ground locks) to achieve the security rating. Coupled with its perforation this makes it the ideal product for car parks as it allows ventilation, visibility and a high security rating without someone having to get out of the vehicle and take out the locks (many companies leave the locks off which means the product is not technically rated to LPS1175 SR2).

Finally, the product is made from aluminium rather than steel meaning it is lighter (so will be cheaper to run and maintain as the motor will be under much less stress) and looks more aesthetically pleasing.

IDEAL USES

- Car parks
- Commercial properties
- Water treatment plants
- Areas that require higher security with perforation

KEY FEATURES

- Is "Secured by Design" and security rated LPS1175 SR2
- Can be perforated or solid
- Uses "lockdown technology" to lock automatically so that retrofitted locking extras are not needed
- Unlike similar products in the industry - this shutter can be opened from the outside

TECHNICAL SPECIFICATIONS

Performance

Certified to LPS 1175 issue 7

Security Rating 2 (SR2)

Approved dimensions

Maximum certified width: 6.0m

Minimum certified width: 1.8m

Maximum certified height: 6.0m

Minimum certified height: 1.8m

Shutter curtain

Extruded aluminium lockdown profiles.

Finish as delivered: polyester powder coated in standard RAL/BS colour.

Bottom rail

Reinforced extruded aluminium section with strengthened core.

Finish as delivered: polyester powder coated in standard RAL/BS colour.

Frames/Guides

Heavy duty guide profiles anchored direct to the structure.

Finish as delivered: polyester powder coated in standard RAL/BS colour.

Substrate

Certified installation onto:

- Brickwork
- Blockwork
- Concrete
- Structural Steelwork
- Operation
- Motorised to allow controlled ascent and descent.
- 240v - Low duty cycle, or where limited to single phase supply.
- 415v - High duty cycle or for larger apertures.

Controls

Full range of compatible controls including push button switch, key switch, radio control or possible to integrated into building management systems and third party alarms.

Safety on close as assessment directs.

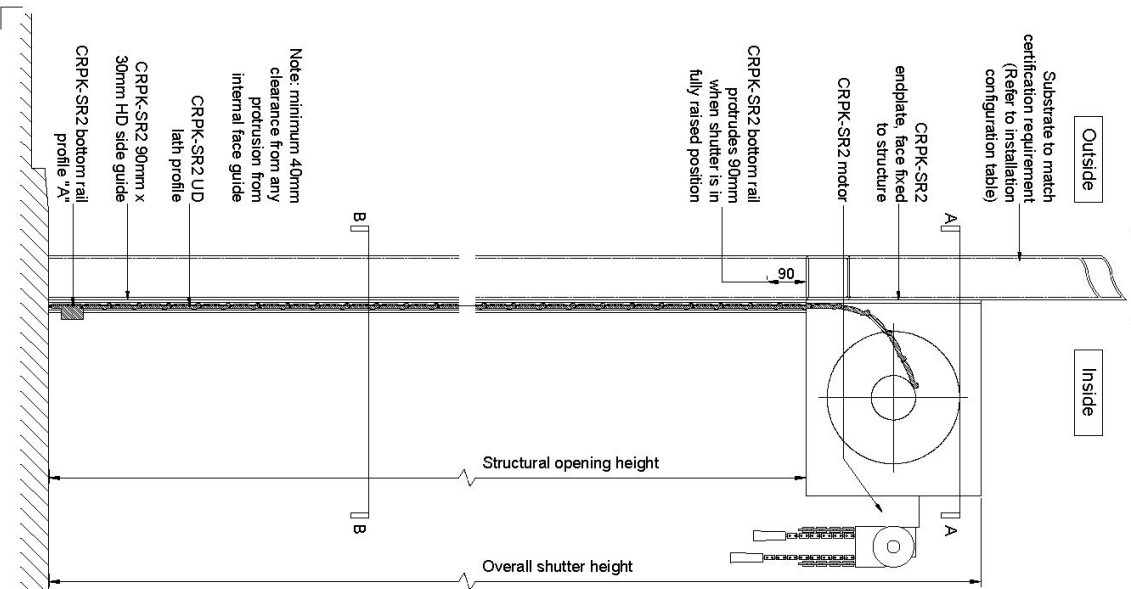
OPTIONS AND VARIATIONS

- Can be powder coated in any standard RAL/BS colour
- High or low duty power phase
- Can come fully perforated or partially perforated

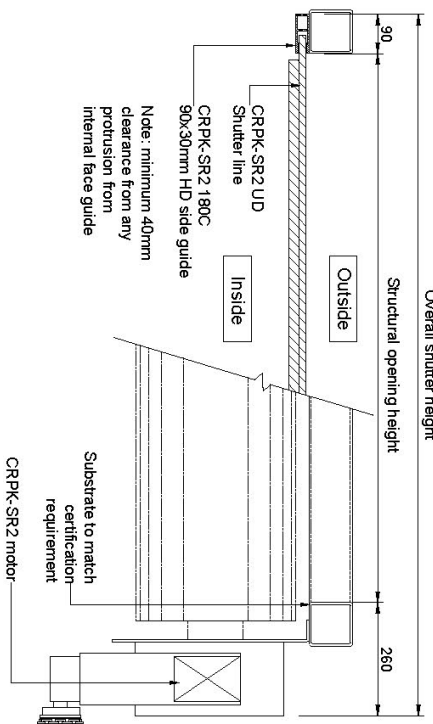
ILLUSTRATIONS



Section
(scale 1:10)



Plan Through: B-B
(scale 1:10)



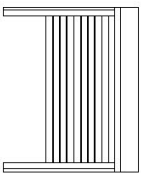
Plan Through: A-A
(scale 1:10)

CRPK-SR2 SPECIALIST ROLLER SHUTTER SYSTEMS					
Security Rating	Bottom rail profile	Minimum structural opening width (m)	Maximum structural opening width (m)	Minimum structural opening height (m)	Maximum structural opening height (m)
SR2	A	1.0	6	2.0	6.0
SR2 Visio	A	1.0	3.2	2.0	6.0

NOTE: The installation shall be direct to the substrate and not via intermediate substrates, such as plasterboard

Configuration		Installation Configurations			
		Substrate			
Internally face fitted roller shutter		Brickwork	Blockwork	Concrete	3mm Structural Steelwork or greater
		✓	✓	✓	✓

<small>© This drawing is copyright of UK Roller Shutters and Garage Doors Ltd and must not be reproduced whole or in part without prior written consent.</small>			
Revision	Description	CMR	DATE
A	Initial Issue		May 2016
<small>The approval of these drawings constitutes acceptance of the design and construction of the shutter system in accordance with the specifications and standards set out in the tender documentation or drawings.</small>			



UK Roller Shutters & Garage Doors Ltd
Unit 41, Wombourne Enterprise Park
Bridgnorth Road
Wombourne
WV5 0AL
Telephone: +44 (0) 1384 22 17 43



UK ROLLER SHUTTERS
SUPPLIER & FITTER OF ROLLER SHUTTERS

UK ROLLER SHUTTERS
SUPPLIER & FITTER OF ROLLER SHUTTERS

TEL: +44(0) 1384 221743

EMAIL: SALES@UKROLLERSHUTTERS.CO.UK
