

ALUMOTIVE Vehicle Shutter

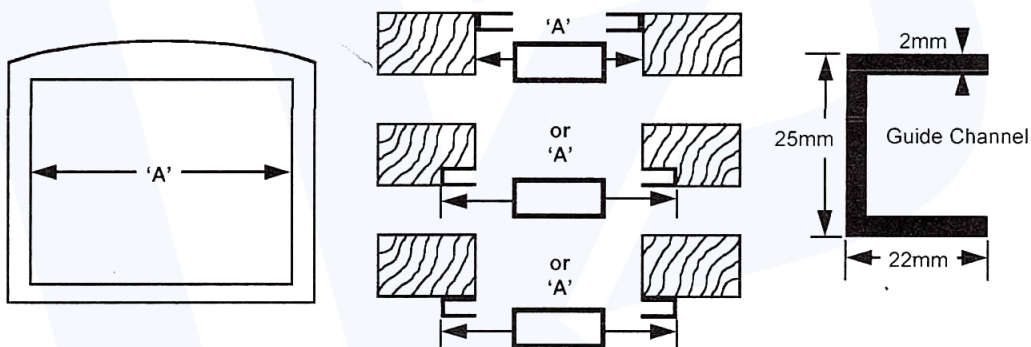
ORDER FORM / DIMENSIONAL DETAILS

PLEASE COMPLETE FIG. 1 PLUS (FIG. 2, 3 OR 4 Depending on shutter type required)

Customer Name:		Customer Order No:	
Address		Customer Tel No:	
		Order Date:	Date Required:
PERSON PLACING ORDER:		Swinging Arms/Fixed Plate (Select)	
Type of Shutter:	Eurogard	SHUTTER	
Quantity:	Price Each:	Colour:	Type of Lock:
Pull Strap	Side Seals	Customer signature:	
Lath Type:	SINGLE SKIN	DOUBLE SKIN	ANODISED LATH

'A' MEASUREMENT - Width over back of channels.

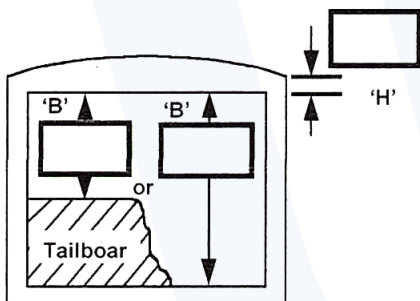
Fig. 1



ROLLER SHUTTER 'B' MEASUREMENT

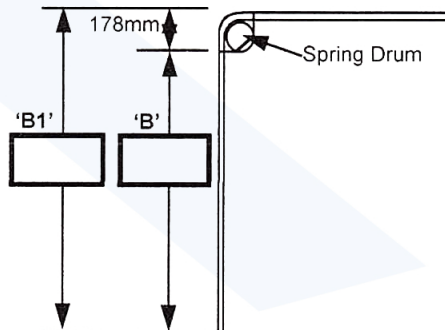
Height from top of floor (or tailboard) to underside of headboard.

Fig. 2



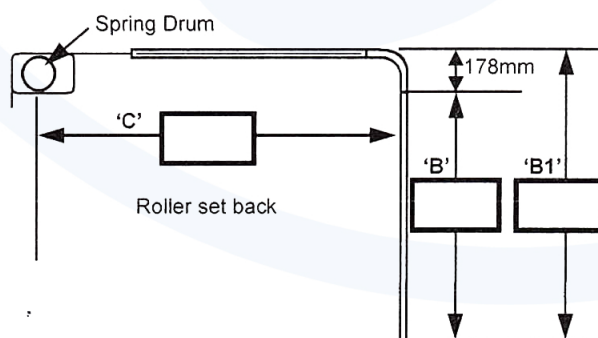
OVERHEAD SHUTTER

Fig. 3



ROOF TYPE SHUTTER

Fig. 4



ORDERING DIMENSIONS

'A' - WIDTH OVER BACK OF CHANNELS

'B' - APERTURE HEIGHT

'H' - HEADER HEIGHT



UK ROLLER SHUTTERS
SUPPLIER & FITTER OF ROLLER SHUTTERS

UNIT 41 WOMBOURNE ENTERPRISE PARK, BRIDGNORTH ROAD, WOMBOURNE, WEST MIDLANDS, WV5 0AL
01384 221 743 - SALES@UKROLLERSHUTTERS.CO.UK