



**ALU-1237 SOLID
ALUMINIUM SECURITY
ROLLER SHUTTER**

ALU-1237 SOLID ALUMINIUM SECURITY ROLLER SHUTTER



PRODUCT DESCRIPTION

The ALU-1237 is often used on residential and commercial buildings where security is the primary concern. This is because it has a very aesthetically pleasing design and it is also made using an extruded profile, giving it greater strength and stability over regular lath.

Furthermore, this model of shutter can be upgraded, for a surcharge, in order to achieve a higher security

rating – Secured by Design LPS1175 SR1 (see accreditations explained on our website).

Although not insulated, this product in its basic form offers a more secure way of covering your apertures than the ALU12-M411. These roller shutters can come perforated or punched if required (see punched and perforated sections) and come white or brown as standard, but can be powder coated to any stocked RAL/BS colour for a surcharge.

IDEAL USES

- This particular model caters to smaller openings and domestic properties.
- You would generally see this used in:
- Office doors & windows
- Bars
- Reception counters
- Display areas
- Shop fronts
- Domestic properties
- Garage doors
- Van & Vehicle shutters

KEY FEATURES

- Large range of Aluminum shutters that offer a secure and weatherproof solution to safeguarding large or small openings.
- Traditionally gives a better cosmetic appearance to that of a steel shutter.
- Much lighter than a steel shutter so less energy is required to open them.
- Powder coated White or Brown as standard. Can be powder coated to any standard RAL/BS colour for an additional charge.
- Options for Vision & Airflow using Punched or Perforated lath.

TECHNICAL SPECIFICATIONS

Applications

Domestic and commercial sites, up to 12m². Our ALU-1237 is ideal for window openings and pedestrian door entrances, either internally or externally mounted with a face or reveal fit.

Note: The ALU-1237 can be upgraded to insurance approved, Secure by Design status – LPS1175 SR1. Punched or Perforated profile slats can be incorporated as required for full or partial vision. Can have poly-carbonate inserts to infill the punched section.

Curtain Slat

Double-skinned extruded aluminium.

Blind Surface: 37.5mm
Weight per m²: 7.9kg
Maximum Width: 4000mm
Maximum Surface: 9m² (Manual operation)
12m² (Electric operation)

Enclosure

Manufactured using roll-formed aluminium with pressure-moulded aluminium end plates. Circular box available for 165mm/205mm plates for an additional cost.

Guide Height (mm)	Plate size (mm)
1050	150
1535	165
1820	180
2795	205
3550	250
4700	300

Plate sizes shown as a guide only and may vary.

Guide Channels/Bottom Slat

Extruded aluminium bottom slat with weather seal. Extruded aluminium guide channels with brush inserts. 45mm, 53mm, 60mm HD or 66mm depths available as required. Self-packing and circular surface guides available on request.



Finish

Standard colours: White (RAL 9016) or Brown (RAL 8019) as standard. Can be powder coated to any stock RAL/BS colour for an additional cost.

Operation

Cord Belt: A swivel winder coils a belt attached to the rotating shutter barrel.

Rod & Crank: Geared rod and crank handle winds the shutter.

Spring & Lock: A counter balanced spring assembly with a key lock bottom slat & handles.

Electric: Single phase tubular motor & wall switch as standard. Numerous options such as group or remote control etc. Manual override facility as required (surcharge applies).

OPTIONS AND VARIATIONS

Operation/Controls

Electric

(Not all options are available on all size shutters)

- Key switch
- Radio/remote control
- Rocker switch
- Timer closing
- Loop and Radar operation
- Smart phone
- Swipe Card activation

Manual

Spring and lock operation (for smaller shutters)

Cord operation (for smaller shutters)

Lath Design

The lath can be perforated or punched to allow ventilation and/or provide visibility into the premises whilst maintaining the required security.

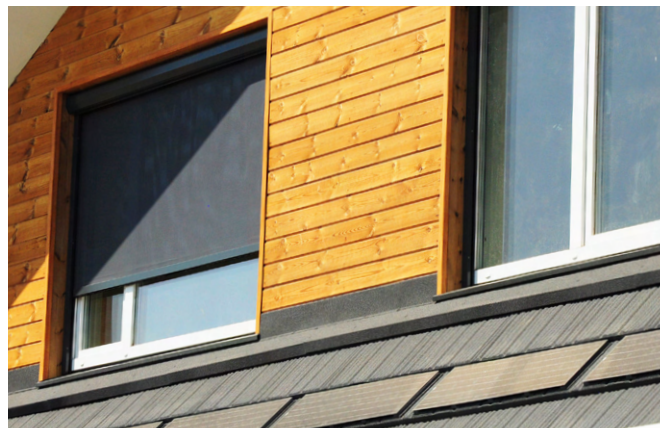
Poly-carbonate inserts can be included for Punched model for an additional cost if required

Finishes

Can be Polyester powder coated or plastisol coated in a range of standard RAL colours' for an extra charge.

Accreditations

All of our security shutters guarantee a high level of security against vandalism and theft. However, for an extra charge you can have one of our shutters with a distinct security or fire rating accreditation including SBD (Secured by Design) or LPS 1175 security rated levels 1-4.





UK ROLLER SHUTTERS
SUPPLIER & FITTER OF ROLLER SHUTTERS

TEL: +44(0) 1384 221743

EMAIL: SALES@UKROLLERSHUTTERS.CO.UK
